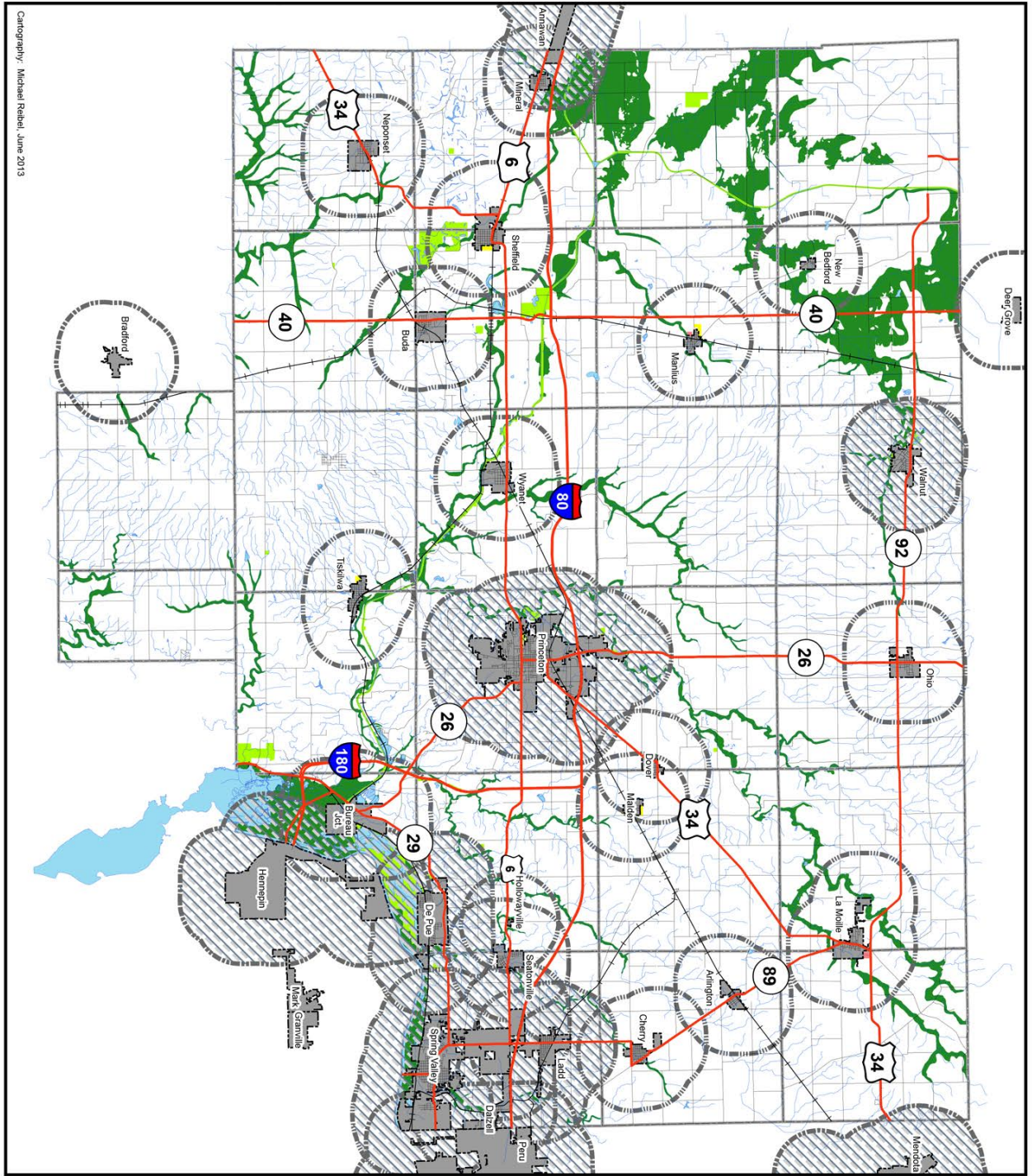


# Map 8.2 General Development Plan Bureau County, Illinois



**Legend**

- U.S. and State Highways
- Other Roads
- Railroads
- Streams
- Incorporated Cities/Villages
- 1.5 Mile Municipal Planning Radius
- Water Bodies
- Township Boundary
- Public Parks and Other Open Space

**General Development Plan**

- Residential
- Commercial
- Conservation / Open Space

**Area Covered by Municipal Comprehensive Plan:**  
Refer to applicable municipality's comprehensive plan or other planning document(s) for guidance in these areas.

**NOTE:** All unmarked lands outside urban and suburban areas are planned for continued agricultural and agriculturally-related uses. Only limited residential uses should be permitted.

