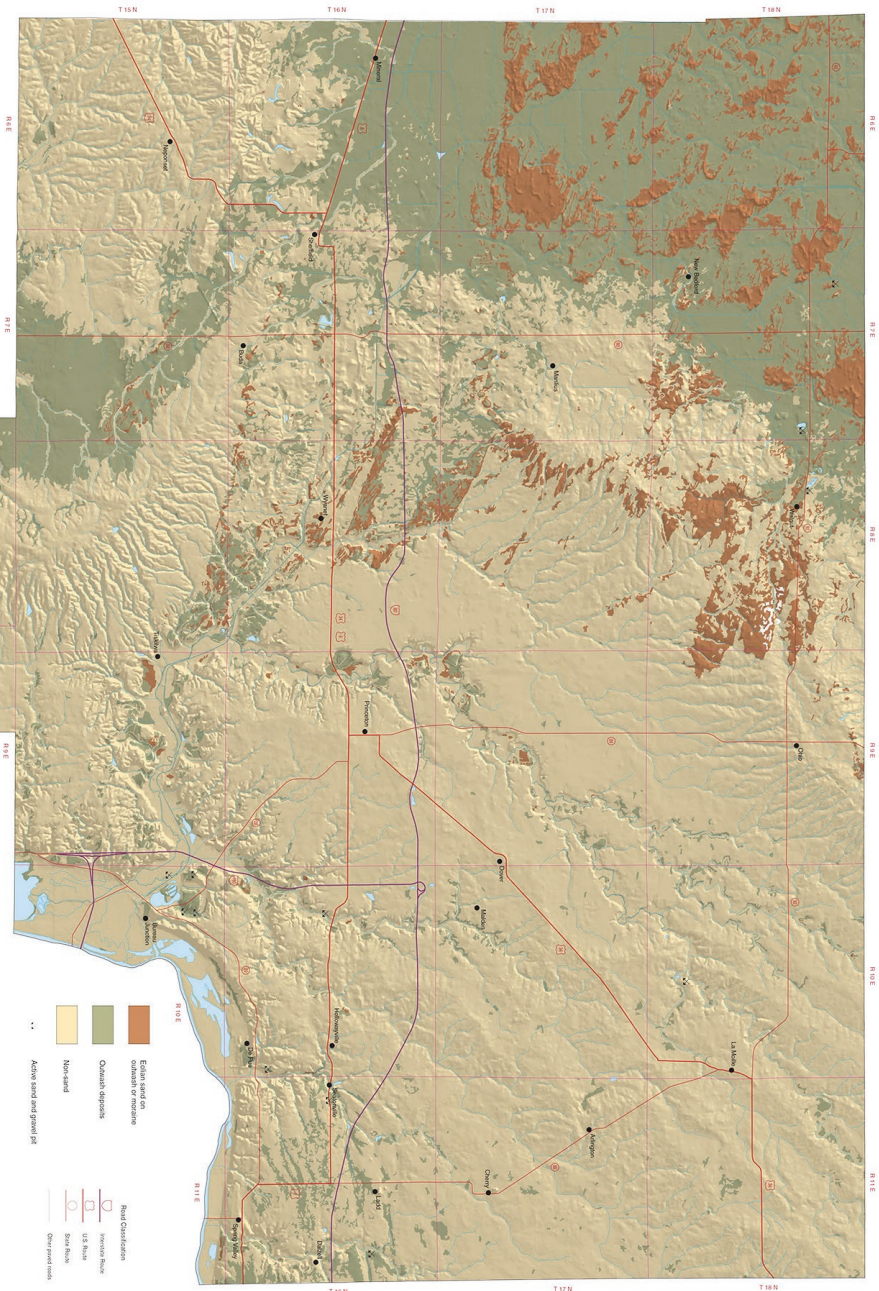


Map 5-6
**DISTRIBUTION OF SURFICIAL EOLIAN AND
 OUTWASH SAND DEPOSITS**
 BUREAU COUNTY, ILLINOIS
 Xianlongping Zhao
 2009



Data were compiled by Zhao, Xianlongping from 1:50,000 scale Digital Line Graph data provided by the United States Geological Survey, Northern American Dataset of 1983 (NAD83), Lambert Conformal Conic Projection.

Geology based on field work and data compilation by Xianlongping Zhao, 2009.

Digital cartography by Jane E. Johnson and Steve W. Babel, Illinois State Geological Survey.

This is the State Geological Survey of the University of Illinois under its general supervision and control. The responsibility for the accuracy of the data and the interpretation of the data is that of the user. The accuracy of the data and the interpretation of the data is that of the user. The accuracy of the data and the interpretation of the data is that of the user.

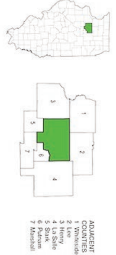
This map provides a general view of sand distribution. It does not replace the need for detailed investigation of specific sites.

Recommended citation:
 Zhao, Xianlongping. 2009. Geologic map of Bureau County, Illinois. ICGM Bureau County SS, Illinois State Geological Survey, Urbana, Illinois. 1:50,000.

©2009 University of Illinois Board of Trustees. All rights reserved.
 For permission information, contact the Illinois State Geological Survey.



For permission information, contact the Illinois State Geological Survey.



Sand and gravel deposits are widespread in northwestern Illinois and are important components of the geology of the region. These deposits are highly variable in thickness and composition, and are composed of poorly sorted sand and gravel from 10 to 30 feet thick and to 30 feet in diameter. They are composed of sand and gravel, and contain a smaller amount of silt and clay. They are deposited on various hills, moraines, and stream terraces.

Surficial sand deposits, produced in the Pleistocene and Holocene, are widespread in northwestern Illinois. They are composed of sand and gravel, and contain a smaller amount of silt and clay. They are deposited on various hills, moraines, and stream terraces.

These deposits are highly variable in thickness and composition, and are composed of poorly sorted sand and gravel from 10 to 30 feet thick and to 30 feet in diameter. They are composed of sand and gravel, and contain a smaller amount of silt and clay. They are deposited on various hills, moraines, and stream terraces.

These deposits are highly variable in thickness and composition, and are composed of poorly sorted sand and gravel from 10 to 30 feet thick and to 30 feet in diameter. They are composed of sand and gravel, and contain a smaller amount of silt and clay. They are deposited on various hills, moraines, and stream terraces.

These deposits are highly variable in thickness and composition, and are composed of poorly sorted sand and gravel from 10 to 30 feet thick and to 30 feet in diameter. They are composed of sand and gravel, and contain a smaller amount of silt and clay. They are deposited on various hills, moraines, and stream terraces.

The sand and gravel deposits are highly variable in thickness and composition, and are composed of poorly sorted sand and gravel from 10 to 30 feet thick and to 30 feet in diameter. They are composed of sand and gravel, and contain a smaller amount of silt and clay. They are deposited on various hills, moraines, and stream terraces.

The sand and gravel deposits are highly variable in thickness and composition, and are composed of poorly sorted sand and gravel from 10 to 30 feet thick and to 30 feet in diameter. They are composed of sand and gravel, and contain a smaller amount of silt and clay. They are deposited on various hills, moraines, and stream terraces.

The sand and gravel deposits are highly variable in thickness and composition, and are composed of poorly sorted sand and gravel from 10 to 30 feet thick and to 30 feet in diameter. They are composed of sand and gravel, and contain a smaller amount of silt and clay. They are deposited on various hills, moraines, and stream terraces.

The sand and gravel deposits are highly variable in thickness and composition, and are composed of poorly sorted sand and gravel from 10 to 30 feet thick and to 30 feet in diameter. They are composed of sand and gravel, and contain a smaller amount of silt and clay. They are deposited on various hills, moraines, and stream terraces.

The sand and gravel deposits are highly variable in thickness and composition, and are composed of poorly sorted sand and gravel from 10 to 30 feet thick and to 30 feet in diameter. They are composed of sand and gravel, and contain a smaller amount of silt and clay. They are deposited on various hills, moraines, and stream terraces.

The sand and gravel deposits are highly variable in thickness and composition, and are composed of poorly sorted sand and gravel from 10 to 30 feet thick and to 30 feet in diameter. They are composed of sand and gravel, and contain a smaller amount of silt and clay. They are deposited on various hills, moraines, and stream terraces.

The sand and gravel deposits are highly variable in thickness and composition, and are composed of poorly sorted sand and gravel from 10 to 30 feet thick and to 30 feet in diameter. They are composed of sand and gravel, and contain a smaller amount of silt and clay. They are deposited on various hills, moraines, and stream terraces.

The sand and gravel deposits are highly variable in thickness and composition, and are composed of poorly sorted sand and gravel from 10 to 30 feet thick and to 30 feet in diameter. They are composed of sand and gravel, and contain a smaller amount of silt and clay. They are deposited on various hills, moraines, and stream terraces.

The sand and gravel deposits are highly variable in thickness and composition, and are composed of poorly sorted sand and gravel from 10 to 30 feet thick and to 30 feet in diameter. They are composed of sand and gravel, and contain a smaller amount of silt and clay. They are deposited on various hills, moraines, and stream terraces.

The sand and gravel deposits are highly variable in thickness and composition, and are composed of poorly sorted sand and gravel from 10 to 30 feet thick and to 30 feet in diameter. They are composed of sand and gravel, and contain a smaller amount of silt and clay. They are deposited on various hills, moraines, and stream terraces.

The sand and gravel deposits are highly variable in thickness and composition, and are composed of poorly sorted sand and gravel from 10 to 30 feet thick and to 30 feet in diameter. They are composed of sand and gravel, and contain a smaller amount of silt and clay. They are deposited on various hills, moraines, and stream terraces.

The sand and gravel deposits are highly variable in thickness and composition, and are composed of poorly sorted sand and gravel from 10 to 30 feet thick and to 30 feet in diameter. They are composed of sand and gravel, and contain a smaller amount of silt and clay. They are deposited on various hills, moraines, and stream terraces.